

Needle Shut-off Nozzle - Type S

Spring operated

Maximum injection pressure: 2,000 bar (29,000 psi)
Maximum melt temperature: 350°C (650°F)

Prevents:

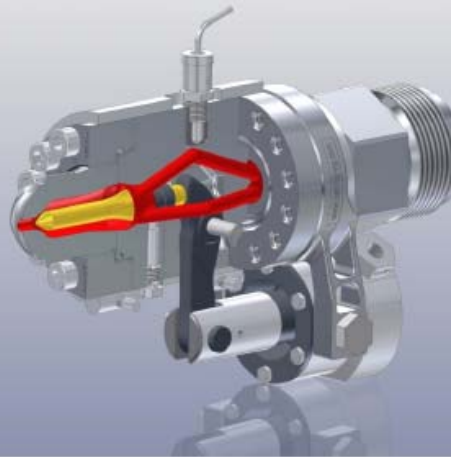
- Filamentation
- Material leakage when dosing with retracted injection unit
- Material leakage while vertically injecting

Productivity factors:

- Controlled, clean shut-off of the melt stream
- Shorter cycle times → increase in productivity
- Increased process reliability and repeatability
- Usability with increased back pressure → improved homogenization
- Quick machine installation
- Retrofit capability
- Economical and reliable

Option:

- Filter module



Needle Shut-off Nozzle - Type HP

Pneumatic, hydraulic or electromagnetic actuation

Maximum injection pressure: 3,000 bar (43,500 psi)
Maximum melt temperature: 400°C (750°F)

Prevents:

- Filamentation
- Material leakage when dosing with retracted injection unit
- Material leakage while vertically injecting

Suitable for special applications such as:

- Physical foaming
- Melt pre-compression
- Hot-runner injection molding

Supported process control:

- Process monitoring with piston position sensors on the actuator

Productivity factors:

- Fast, accurate shut-off of the melt stream
- Shorter cycle times → increase in productivity
- Increased process reliability and repeatability
- Usability with increased back pressure → improved homogenization
- Retrofit capability

Options:

- Filter module
- Mixer
- GIT



Bolt Shut-off Nozzle - Type BHP

Pneumatic or hydraulic actuation

Maximum injection pressure: 3,000 bar (43,500 psi)
Maximum melt temperature: 400°C (750°F)

Prevents:

- Streaking, memory effects
- Material leakage when dosing with retracted injection unit
- Material leakage while vertically injecting

Suitable for special applications such as:

- Hot-runner injection molding

Supported process control:

- Process monitoring with piston position sensors on the actuator

Productivity factors:

- Fast, accurate shut-off of the melt stream
- Shorter cycle times → increase in productivity
- Increased process reliability and repeatability
- Usability with increased back pressure → improved homogenization
- Retrofit capability
- Rheologically optimized → straight melt channel

Options:

- Filter module
- Mixer
- GIT

Herzog-AG Degersheim, founded in 1969, is specialized in the development and manufacture of nozzles and components for the plastics industry. Nozzles with needle or bolt shut-off mechanisms, are used for the processing of thermoplastics and elastomers.

In order to further serve the global market, on 1st October 2008 **Herzog Injection Technology Inc.** opened its sales and service operation in MA, USA. This enterprise is a subsidiary of Herzog AG Degersheim (Switzerland).

Our target is to provide flexibility & close proximity to our customers. Application specific products are our strength and with this we ensure our customers receive the most effective solutions at the highest level of quality.

For more information and our full product range visit: www.herzog-ag.com

"Run your process with the world's best shut-off system installed on your machine"

Please contact us for a no-obligation consultation.

USA:
Herzog Injection Technology, Inc.
245 Western AVE Ste 4
Essex, MA 01929
Tel.: +1 (0)978 768 0090
Toll free: 866-9-HERZOG (866 943 7964)
Email: usa@herzog-ag.com

Switzerland:
Herzog AG Degersheim
Huswiesstrasse 6
CH-9116 Wolfertswil
Tel.: +41 (0)71 394 19 69
Email: info@herzog-ag.com

China:
Herzog(China) Co., Ltd.
No.438 Zhujiang Road Beilun
Ningbo, China
PC: 315800
Tel.: +86 (0)574 8696 3001
Email: asia@herzog-ag.com.cn

Our Range of Nozzles & Systems

For more information please visit: www.herzog-ag.com

J-J
Machine Shut-Off Nozzles
Kopf standard K=160 (Zweitteilig)

Needle shut-off type A(S) spring operated
max. injection pressure 2000bar, at 350°C

Needle shut-off type SHP spring operated
max. injection pressure 3000bar, at 400°C

Needle shut-off type HP
pneumatically or hydraulically actuated
max. injection pressure 3000bar, at 400°C

Bolt shut-off type BHP
pneumatically or hydraulically actuated
max. injection pressure 3000bar, at 400°C

Rotary bolt shut-off type DB
pneumatically actuated
max. injection pressure 2500bar, at 400°C

Needle shut-off LSR, tempered (cooled) type E
pneumatically actuated
operating data 2500bar, -20°C to 110°C

H-H
Machine
Open Nozzles
Kopf standard K=130 (Zweitteilig)

Filter nozzle (gap principle) type F
with or without flushing closure system

Heat conducting extension type W
One-piece or with exchangeable tip

Static X - Mixer type M

GIT
Gas Injection
Technology

Machine nozzle for GIT type GM
Deployable without existing machine nozzle
or can be adapted to existing machine nozzles

Mold injectors for GIT
Quick installation

Options
For Shut-Off
Nozzles

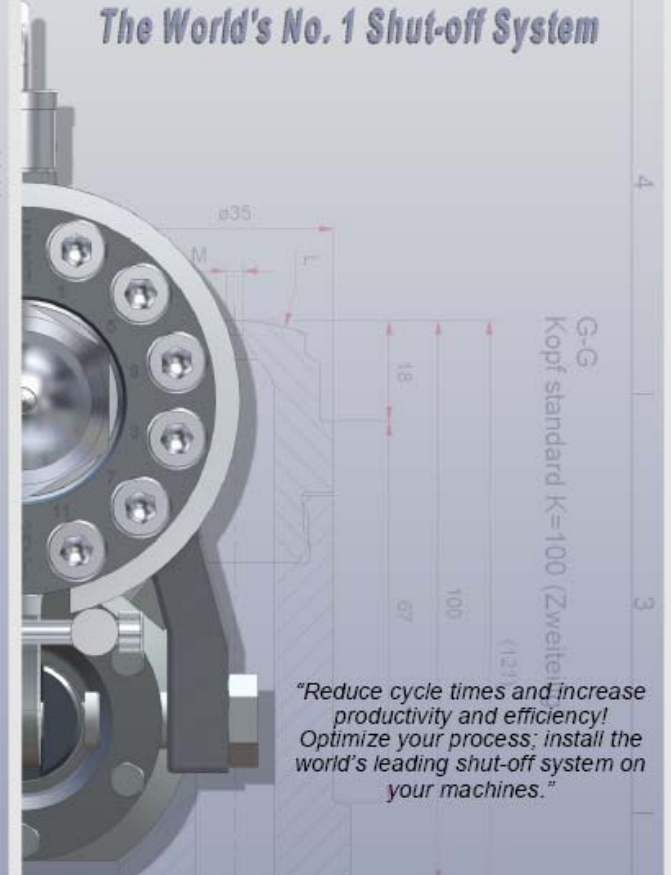
- Melt - screen filter for needle shut-off
- Heating systems
- Piston position sensor for actuator
- Needle position monitoring for needle shut-off
- Flexible actuator supply

Valve
Systems

- Injection valves
- Non-return valves

herzog®

The World's No. 1 Shut-off System



"Reduce cycle times and increase productivity and efficiency! Optimize your process; install the world's leading shut-off system on your machines."

Swiss Technology