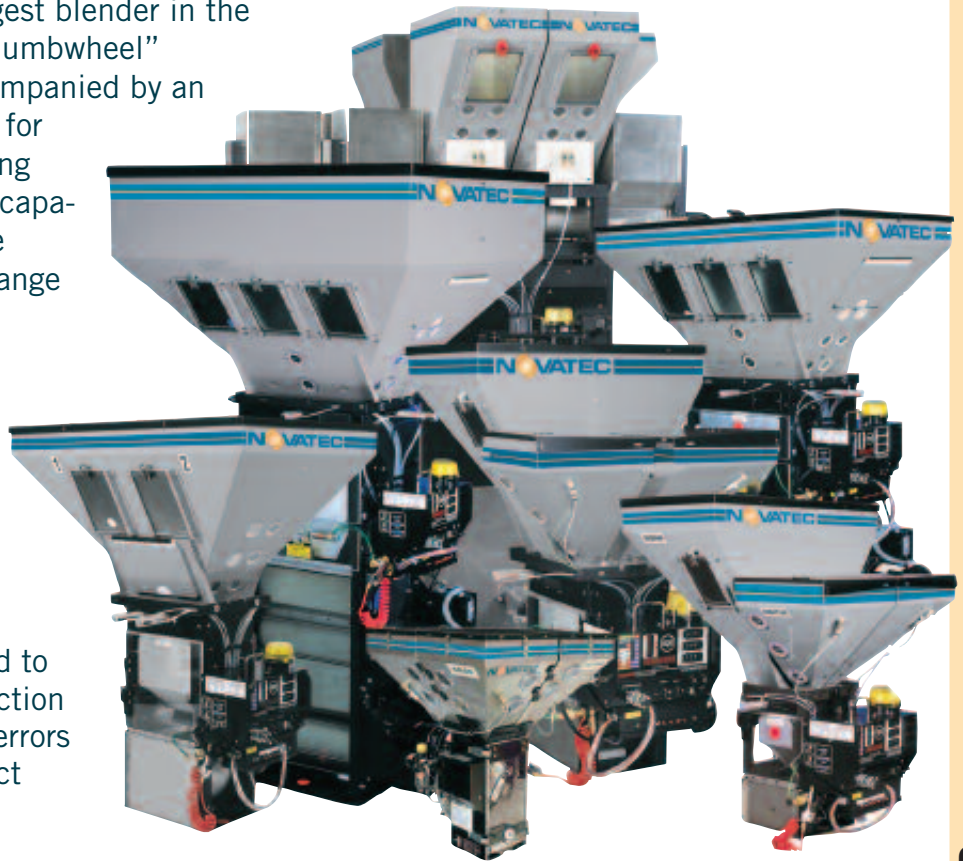


The Most Popular Blenders Worldwide.

This broad line of blenders has been the world leader for years. They accommodate a full range of throughputs up to 12,000 lb./hr. – the largest blender in the world. The standard, easy entry “thumbwheel” microprocessor control is now accompanied by an optional color touch screen control for optimum blender operation including Ethernet connectivity and wireless capability. Multiple dispense devices are available to accommodate a wide range of materials.

- **More Sizes and Models**
Eight blender sizes and over 100 models allow processors to target their specific needs
- **Advanced Dispense Technology**
Batch to batch blend ratio is held to 0.1% - and advanced error-correction logic recognizes even miniscule errors and makes a correction for perfect blend ratio every time.
- **Choice of Controllers**
 - Standard Microprocessor Control
Enter settings for percentage of color, additive or regrind on the thumbwheel switches, and the system does the rest.
 - Optional Color Touch Screen Control
Provides easy entry of parameters with optimum blender operation, Ethernet connectivity and wireless capability
- **Multiple Dispense Devices**
Various dispense devices are designed to assist the dosing of pellets, regrind, additives, flakes and powders



More Sizes, More Options, More Choices

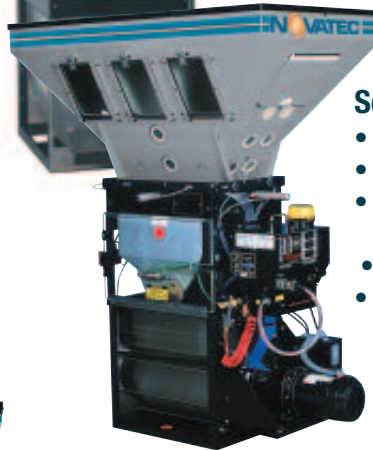
Series 1800

- 21 models available
- Up to 5000 lb./hr. (2270 kg/hr.)
- Ideal for high output extruders and large central blending systems
- Two, four, or six compartment hoppers
- Up to 6 feeders



MaxiBatch™ Blender

- For hard-to-handle bulk powders like additives and wood flour
- Up to 12,000 lb./hr. (5,500 kg/hr.)
- High flow dispense valve rated at 10,000 grams/second
- For as many as 12 ingredients



Series 900

- 21 models available
- Up to 4000 lb./hr.(1800 kg/hr.)
- Designed for large extruders, blown film lines and central blending systems
- 2, 4, or 6 compartment hoppers
- Up to 6 feeders

Series 400

- 12 models available
- Up to 1450 lb./hr (650 kg/hr.)
- For small to medium extruders, large injection machines and central blending systems
- Removable hopper option
- Up to 8 components

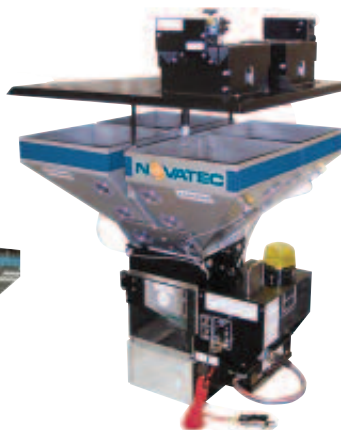


Series 200

- 12 models available
- Up to 900 lb./hr. (400 kg/hr.)
- For injection molders, small extruders, and central blending
- Removable hopper option for quick color changes
- Up to 8 components

Series 100

- 5 models available
- Up to 450 lb./hr. (200 kg/hr.)
- For injection molders and small extruders
- Removable hopper option for quick color changes
- Up to 4 components



Micro Blender

- 5 models available
- Up to 100 lb./hr. (45 kg/hr.)
- Ideal for small injection machines
- Easy flow regrind corner valve
- Removable hoppers or quick color changes
- Up to 4 components



MicroPlus

- 5 models available
- Up to 350 lb./hr. (160 kg/hr.)
- Easy elevation of lids and loaders for easy clean out
- For injection molders, small extruders, and central blending
- Removable hoppers for quick color changes
- Up to 4 components

Eight blender sizes with over 40 models plus feeders for pellets, powders and regrind as well as liquid color pumps.

How it works

- **Removable Material Supply Hoppers**

- Removable bins are available on many models.
- Quick disconnect of pneumatic lines allows fast removal, cleaning, and replacement when changing colors or materials.

- **Automatic Recalibration**

- Material flow rate is constantly monitored, and each batch is followed by a correction routine to deliver perfect dispense weights.

- **Direct Setting of Percentages - No Calculations**

- Enter settings for percentage of color, additive or regrind on the thumbwheel switches, and the system does the rest.
- Optional touch-screen control now available.

- **Immune to Vibration**

- Load cell readings that have been compromised by machine shock or vibration are detected and discarded.
- Many models may be mounted directly on the process machine.

- **Advanced Dispense Technology**

- Batch to batch blend ratio is held to 0.1%.
- Advanced error-correction logic recognizes even miniscule errors and makes a correction for perfect blend ratio every time.
- Micro-Pulse™ dispense capability is 3 to 4 pellets per pulse.

- **Easy Material Change**

- Weigh bin is easily removed to facilitate cleanout for material change.



- **Very Simple Operation**

- Load hoppers with material: Regrind, Natural, Color and Additive.
- Set thumbwheel switches for percentage desired.
- Turn controller on.
- The unit now operates automatically, adding components in the proper percentages. If material runs out, an alarm sounds.



- **All Materials Metered byWeight**

- Accuracy is constantly monitored.
- Automatic compensation for material variations.



Removing mixing chamber.



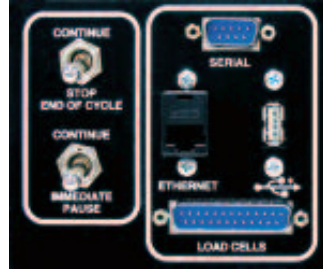
Inside mixing chamber.

Controls

Advanced Controls Provide Flexibility and Accountability

Standard Controller

Though 4-component software is still standard on several models, the 12-component software is available as a no-charge option and is recommended for all extrusion applications, regardless of the number of components.



Clear messages in 9 languages replace coded readout. User-friendly interface: 2-line, 40-character vacuum fluorescent

display. USB port included for software updates, printers and documentation. Ethernet capability now standard.

Advanced Color Touch Screen Control Option



Ideal option for new WSB Blenders or as retro-fit control on any existing WSB

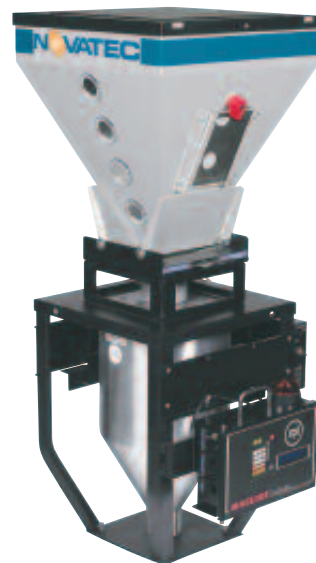
All the features of the standard WSB controller plus the ease of touch screen navigation. This optional control includes an intuitive, user friendly touch screen and Ethernet connectivity. Unique on-board wireless capability eliminates the cost of installing cable throughout the production area and readily links to other wireless equipped machines.

LineMaster™ Extrusion Control

Enhanced Extrusion Control with Loss-in-Weight Hopper

The LineMaster product range monitors material consumption by means of a loss-in-weight hopper mounted on the process throat. The weight consumption data is reported to the LineMaster Control Operator Interface which utilizes the information to control either throughput or yield with the feedback from a digital encoder measuring line speed. Multiple LIW units can be linked via Ethernet communications to the LineMaster Extrusion Control Software for multi-layer applications.

(See Separate data Sheet)



Benefits of LineMaster™

- Improved product quality through permanent an consistent control
- Reduced material costs through improved yield
- Automatic regulation of extruder output
- Increased line productivity with fast start-up and reduced production scrap
- Quick product changeover
- Alarms and user security

Gravimetric Gateway™ Networking Software

Control your productivity through advanced materials management

Networks Blenders To Send & Receive Comprehensive Production Data

Gravimetric Gateway Networking Software is comprised of Server and Client software operating over serial or Ethernet communications. The software provides a materials database, recipe generation with unlimited storage, download capability, real time production overview, trending analysis and report generation in an easy to use Windows® based package. Reports provide valuable information for material inventory, job or product costing, shift performance, quality issues and troubleshooting.

Communications Options

Ethernet connectivity provides communications between the controller and other devices using the MLAN protocol or Modbus TCP/IP.

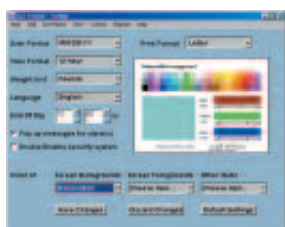
Optional OPC (Object Linking and Embedding for Process Control) servers are available from several third party providers to communicate directly to SCADA systems (Wonderware, iFix, WinCC, Genesis). The future Communications Gateway Card will provide device level communications via Profibus, DeviceNet and other widely used networking standards.

Key Gravimetric Gateway™ (G2) features:

- **Material Usage Reports**
Usage reports can be generated based on many combinations of criteria such as time, date, blender ID number, part number, work order number, operator number, recipe number, material type, etc.
- **Alarm Functions**
G2 detects any alarm in the network and reports location and description of the alarm.
- **Ability To Download/Update Recipes**
G2 users can download recipes to be certain that the correct recipes are running on the proper machines. Recipe settings may be updated from a remote location according to part number, work order number, operator number, recipe number, etc.
- **Security**
Extensive security functions are provided to selectively limit access to recipes and blender operation. There are 3 classes of user password security with predefined templates: Administrator, Supervisor, and Operator. Each user's privileges may be further refined by adjusting over 30 different security fields.
- **Advanced Inventory Management Programs**
Inventory levels can be monitored, and reorder points can be flagged to notify purchasing when low levels are reached. In addition a material accounting record allows entry of material cost to track inventory value on a real-time basis.

Instant Access To Maintenance Updates and Upgrades Software updates and upgrades are immediately available over the Internet. Go to: <http://www.maguire.com/page.php/downloads.htm> where new programs or maintenance updates may be downloaded directly to the user's system.

- Multilingual Versions G2 is available in English, German, Spanish, Italian, French, and Dutch.
- Multi-plant Networking G2 technology expands the potential for multi-plant and even multinational networking.



Setup is simple and flexible.



Blenders are constantly monitored for any changes.



Database of recipes are available for quick access.

Blender Accessories

Vacuum take-off Stands



Vacuum take-off Stands allow blending on the floor and conveying to the process machine. A single pickup lance is standard and up to 4 lances can be added.

Part #	For Blender Model	Footprint L x W	
		in.	cm
VTA-1	MicroBlender & 100 Series	36 x 36	91 x 91
VTA-2	200 & 400 Series	36 x 36	91 x 91
VTA-9	900 & 1800 Series	36 x 42	91 x 107

All models are 27" (69 cm) high and have a 36" (91cm) wide top

AWS-2 Barrel or Gaylord Style Stands



Barrel Stands allow blending into a 220 lb. (100kg) capacity container

Part #	For Blender Model
AWS-1B	100 Series
AWS-2B	200 & 400 Series
AWS-9B	900 & 1800 Series

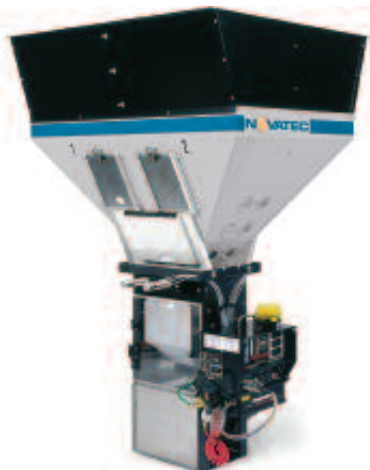
All models have a footprint of (L x W) 31" x 51" (79 x 130 cm)
All models are 40" (102 cm) high and have a 36" (91 cm) wide top

Gaylord (Octobin) Stands allow blending into a large container such as gaylords or octobins

Part #	For Blender Model
AWS-1G	100 Series
AWS-2G	200 & 400 Series
AWS-9G	900 & 1800 Series

All models have a footprint of (L x W) 51" x 63" (130 x 160 cm)
All models are 48" (122 cm) High and have a 56" (142 cm) wide top

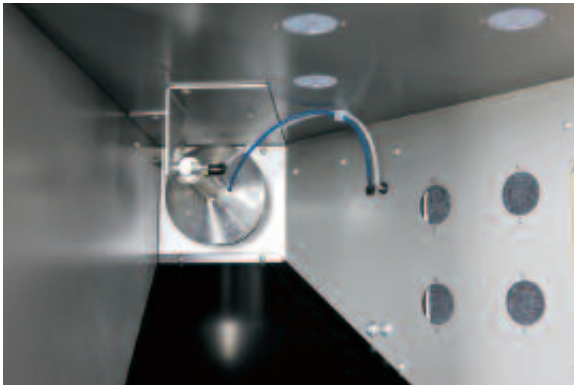
Hopper Extensions



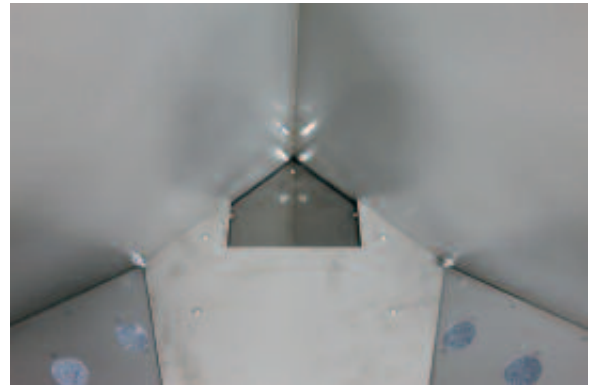
Hopper Extensions are available when additional hopper capacity is required. The flared design also allows use of larger hopper capacities.

WRR-1	for WSB-100 Series blenders
WRR-2	for WSB-200/400 Series blenders
WRR-9	for WSB-900 Series blenders
WRR-18	for WSB-1800 Series blenders

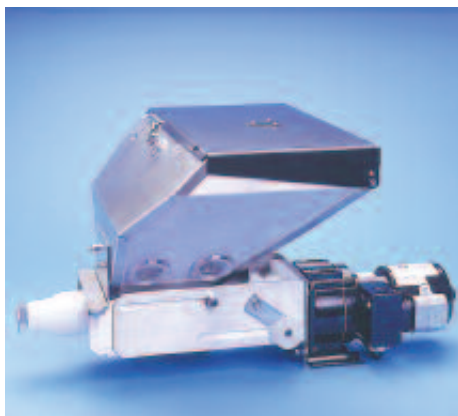
They are also available with straight sides



Low flow pivot valve for pellets, regrind and some LGF (long glass fiber) materials. Several models with multiple flow-rates.



EasyFlow corner valve for pellets and regrind. Several models with multiple flow-rates.



Add-on pellet feeder. Part # 3 AWF-8



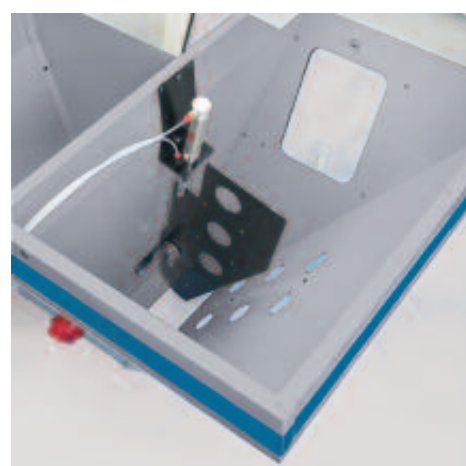
Add-on powder feeder. Part # AWF-8P



Low level alarm system



Controller remote kit for use when blender is mounted on machine and control box can't be easily reached.



Linear Bridge Breaker
 Part # WBB-14L for WSB-140
 Part # WBB-22L for WSB-220/420
 Part # WBB-24L for WSB-240/440
 Part # WBB-94L for WSB-940/1840
 Part # WBB96L for WSB-960/1860

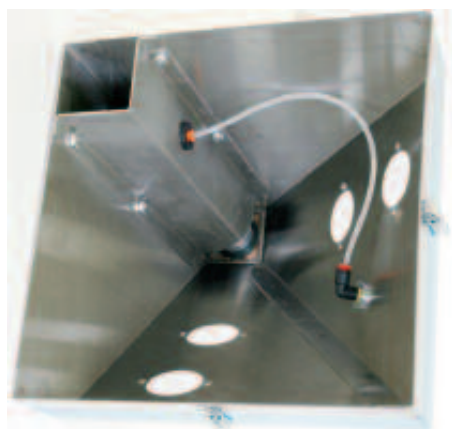
Specifications

	*WSB-MB WSB-MBm1	*WSB-140R WSB-140Rm1	*WSB-240R WSB-240Rm1	*WSB-440R WSB-440Rm1
**Throughput	120 lb./hr.	400 lb./hr.	900 lb./hr.	1600 lb./hr.
Number of Components	up to 4			
Weigh Pan Capacity	400g	1000g	2000g	4000g
Stationary Hoppers and Slide Gates	0	2 w/1.5" x 3" horizontal slide gate	2 w/2" x 3" horizontal slide gate	2 w/2" x 3" horizontal slide gate
*Removable Hoppers and Valves	3 w/vertical valves 1 w/easy-flow corner valve	2 (color/additive)	2 (color/additive)	2 (color/additive)
Options:				
12-Component Software (in lieu of 4-Component)	Add a -T to the end of the main part number (no charge)			
Color Touch Screen Control Remote Connection Kit	Part # OPW-CT1 Part # aspc-3502			
Alternate Voltages	Not available			
Accessories:				
Vacuum take-off Stand Ass'y (includes single outlet & probe- specify 1.5", 2", 2.5" or 3")	VTA-1 (1 ft ³ bin)			VTA-2 (2 ft ³ bin)
Additional Probes (add up to 11)	1.5" avp-24, 2" avp-32, 2.5" avp-40, 3" avp-48			
Gaylord Stand	AWS-2G			
Flow Control Valve	FCA-MB	FCA-3		
Casters - 5" (set of 4)	ahm05			
Venturi Loader (for removable hoppers)	ML-1 (when orderd with a blender, hopper lid will be modified to accommodate the loader bolt hole pattern)			
Hopper Extender	N/A			
Horizontal Slidegate Restrictor	N/A			

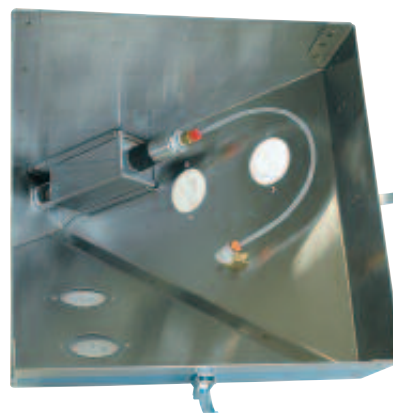
(Specify options and accessories as separate line item on order – See Price List #200).

*Add small m1 to part number for MicroPulse valve in lieu of vertical valve (Specify on Additive or Colorant).

** Nominal throughput based on PC pellets.



Vertical Valve for additive and colorant bins.

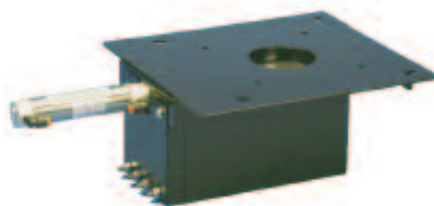


MicroPulse Valve sequentially pulses up to 20 times per second with each cycle delivering about 0.1g of material for a total dispense of 2.5g.

WSB-940	WSB-950	WSB-960	WSB-1840	WSB-1850	WSB-1860
3000 lb./hr.	3000 lb./hr.	2800 lb./hr.	4500 lb./hr.	4500 lb./hr.	4000 lb./hr.
up to 4	up to 5	up to 6	up to 4	up to 5	up to 6
9000g	9000g	9000g	18000g	18000g	18000g
2 w/2" x 3" 2 w/3" x 6" horizontal slide gate	4 w/2" x 3" 1 w/3" x 6" horizontal slide gate	6 w/2" x 3" horizontal slide gate	2 w/2" x 3" 2 w/3" x 6" horizontal slide gate	4 w/2" x 3" 1 w/3" x 6" horizontal slide gate	6 w/2" x 3" horizontal slide gate
N/A					
Options:					
Add a -T (no charge)	Standard		Add a -T (no charge)	Standard	
Part # OPW-CT1 Part # aspc-3502					
460/3/60 Part# OPW-9436 230/3/60 Part # 9236 230/3/50 Part # OPW-9235 400/3/50 Part # 9435 (3-phase mix motor in lieu of 115/1/60)			460/3/60 Part# OPW-8436 230/3/60 Part # 8236 230/3/50 Part # OPW-8235 400/3/50 Part # 8435 (3-phase mix motor in lieu of 115/1/60)		
Accessories:					
VTA-9 (3 ft ³ bin) VTA-6 (6 ft ³ bin)			VTA-6 (6 ft ³ bin)		
1.5" avp-24, 2" avp-32, 2.5" avp-40, 3" avp-48			N/A		
N/A					
FCA-4			N/A		
ahm05			N/A		
N/A					
WRR-94	WRR-95	WRR-96	WRR-184	WRR-185	WRR-186
SGR-1			N/A		



Probe for vacuum take-off.



- FCA Flow Control Assembly
- FCS-MB Flow control including solenoid
 - FCA-3 Flow control, 3" diameter
 - FCA-B Flow control, butterfly type, 3"
 - FCA-4 Flow control, 4" diameter
 - FCA-B4 Flow control, butterfly type, 4"



ML Series Venturi Loader for removable hoppers.